



Price

£950 PCM

Fees Apply



Available 18/11/23

**Southfields Road West
Kingsdown TN15**

Wards
Helping you move forwards

Main Features

- First floor maisonette
- Excellent space throughout
- Quiet village location
- Modern feel
- Part furnished option
- Ideal for a single professional or couple



Deposit required is £1,096.15
Sevenoaks District - Council Tax Band Tax Band A

Accommodation

Lounge 4.45m x 3.68m

Bedroom 3.45m x 3.68m

Bathroom 1.92m x 2.02m

Kitchen 3.29m x 3.00m



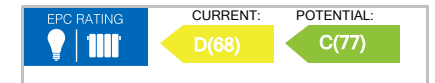
Renting a property is a big commitment and we recommend that you visit the local authority website and these websites which offer helpful information and advice about letting

www.gov.uk/government/publications/how-to-rent

www.gov.uk/private-renting

www.wardsokent.co.uk/renting/tenancy-fees-individuals/

www.gov.uk/green-deal-energy-saving-measures



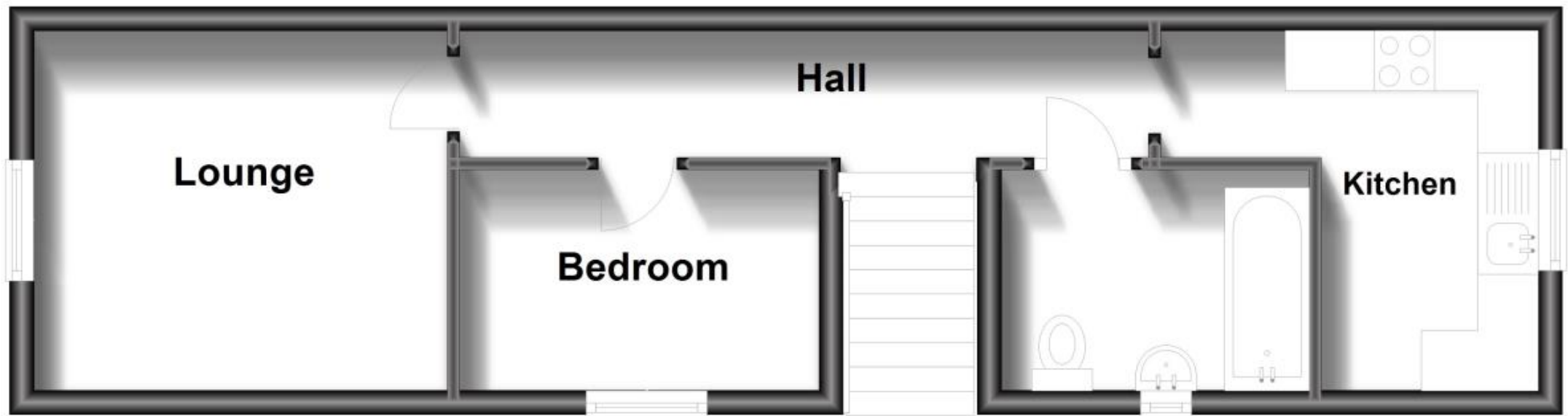
Call Dartford 01322 311291 ■ wardsokent.co.uk

IMPORTANT INFORMATION: Please contact our Lettings Team who will confirm the total costs involved in renting this property. For clarification, we wish to inform the prospective tenant that we have prepared these details as a general guide. The agent has not carried out a detailed survey nor tested the services, appliances, or specific fittings (unless otherwise stated), and no warranty can be given as to their condition. All room measurements are taken at floor level. We strongly recommend that all the information which we provide about the property is verified by yourself and your advisers. The contents of this publication are © Wards, 2015. Wards is a trading name of Arun Estates Limited Registered in England No. 2597969



First Floor

Approx. 34.1 sq. metres (367.1 sq. feet)



Total area: approx. 34.1 sq. metres (367.1 sq. feet)