



## Price

£1,300 PCM

Fees Apply



Available 01/12/23

Moorland Road  
Portsmouth PO1

**cubitt&west**  
Helping you move forwards



## Main Features

- VIEWINGS 17/11/2023
- FURNISHED
- GREAT FAMILY HOME
- READY FOR CHRISTMAS
- Modern finish throughout
- Good location

## Accommodation

Lounge/Dining Room 22'05 x 13'6

Kitchen 8'2 x 11'4

Bathroom 8'2 x 5'8

Bedroom 1 13'6 x 11'11

Bedroom 2 10'6 x 10'10

Bedroom 3 8'2 x 10'11



Deposit required is £1,500.00  
City of Portsmouth - Council Tax Band Tax Band B

Renting a property is a big commitment and we recommend that you visit the local authority website and these websites which offer helpful information and advice about letting

[www.gov.uk/government/publications/how-to-rent](http://www.gov.uk/government/publications/how-to-rent)

[www.gov.uk/private-renting](http://www.gov.uk/private-renting)

[www.cubittandwest.co.uk/renting/tenancy-fees-individuals/](http://www.cubittandwest.co.uk/renting/tenancy-fees-individuals/)

[www.gov.uk/green-deal-energy-saving-measures](http://www.gov.uk/green-deal-energy-saving-measures)

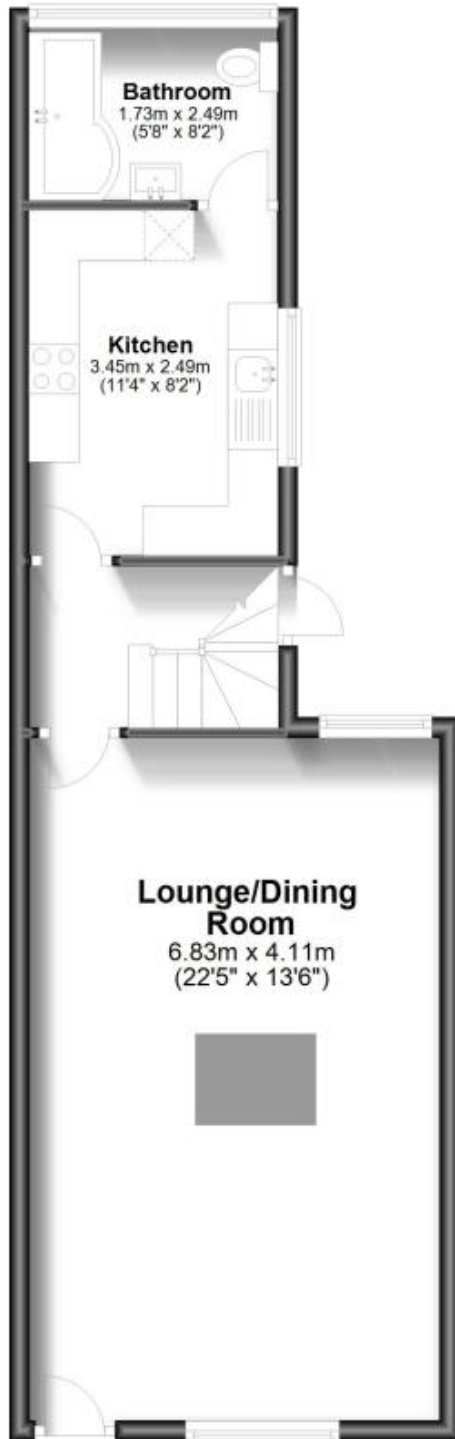
Call Portsmouth 023 92653157 ■ [cubittandwest.co.uk](http://cubittandwest.co.uk)

IMPORTANT INFORMATION: Please contact our Lettings Team who will confirm the total costs involved in renting this property. For clarification, we wish to inform the prospective tenant that we have prepared these details as a general guide. The agent has not carried out a detailed survey nor tested the services, appliances, or specific fittings (unless otherwise stated), and no warranty can be given as to their condition. All room measurements are taken at floor level. We strongly recommend that all the information which we provide about the property is verified by yourself and your advisers. The contents of this publication are © Cubitt & West, 2015. Cubitt & West is a trading name of Arun Estates Limited Registered in England No. 2597969



## Ground Floor

Approx. 45.8 sq. metres (492.9 sq. feet)



## First Floor

Approx. 41.1 sq. metres (442.7 sq. feet)

