



Price

£1,900 PCM

Fees Apply



Available 02/10/23

Northdown Road
Margate CT9

Wards

Helping you move forwards



Main Features

- LISTED TOWNHOUSE
- WALKING DISTANCE TO MARGATE OLD TOWN
- SPACIOUS AND OVER THREE FLOORS
- ENCLOSED SOUTH FACING COURTYARD
- PETS CONSIDERED
- VIEW OF TRINITY SQUARE



Deposit required is £2,192.31
Thanet District - Council Tax Band Tax Band B

Renting a property is a big commitment and we recommend that you visit the local authority website and these websites which offer helpful information and advice about letting

www.gov.uk/government/publications/how-to-rent

www.gov.uk/private-renting

www.wardsofkent.co.uk/renting/tenancy-fees-individuals/

www.gov.uk/green-deal-energy-saving-measures

Call Thanet 01843 597600 ■ wardsofkent.co.uk

IMPORTANT INFORMATION: Please contact our Lettings Team who will confirm the total costs involved in renting this property. For clarification, we wish to inform the prospective tenant that we have prepared these details as a general guide. The agent has not carried out a detailed survey nor tested the services, appliances, or specific fittings (unless otherwise stated), and no warranty can be given as to their condition. All room measurements are taken at floor level. We strongly recommend that all the information which we provide about the property is verified by yourself and your advisers. The contents of this publication are © Wards, 2015. Wards is a trading name of Arun Estates Limited Registered in England No. 2597969

Accommodation

Entrance Hallway

Lounge 4.73 x 4.21

Kitchen 4.51 x 2.15

Bathroom 3.12 x 1.67

First Floor

Bedroom 1 3.34 x 3.85

Bedroom 2 2.27 x 2.24

Bathroom 3.26 x 2.09

WC 1.41 x 1.04

Second Floor

Bedroom 3 3.07 x 3.91

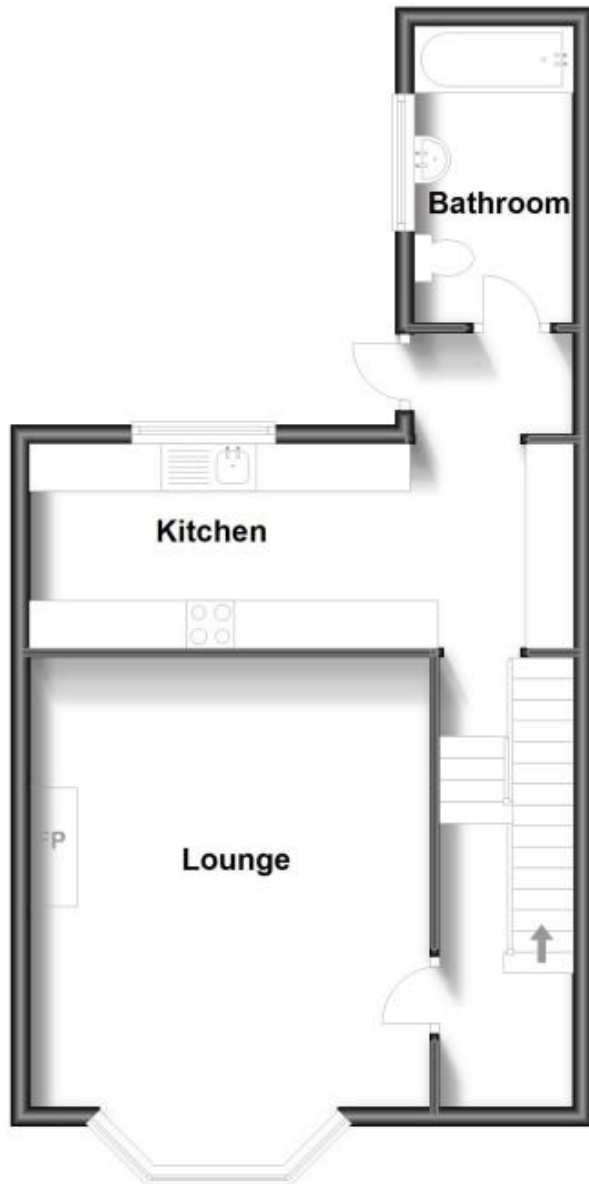
Bedroom 4 2.04 X 2.63

Rear Garden



Ground Floor

Approx. 45.5 sq. metres (489.7 sq. feet)



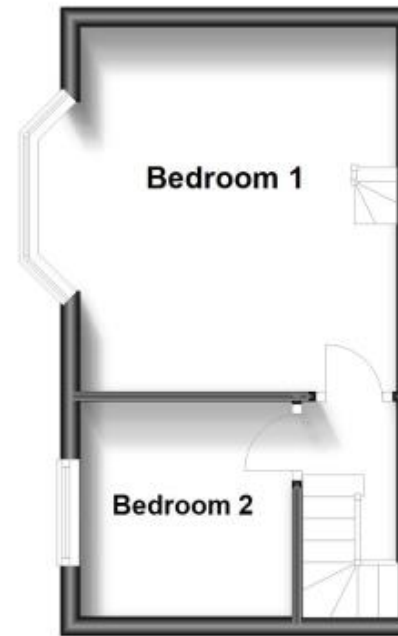
First Floor

Approx. 10.0 sq. metres (107.3 sq. feet)



Second Floor

Approx. 21.0 sq. metres (226.4 sq. feet)



Third Floor

Approx. 20.8 sq. metres (223.6 sq. feet)

