



## Price

£1,900 PCM

Fees Apply



Available 31/08/23

Headcorn Road  
Staplehurst TN12

*Wards*

Helping you move forwards





## Main Features

- Detached
- Garage
- Large Kitchen/Diner
- Solar Panels
- En-suite
- Video Walk About Available



Deposit required is £2,192.31  
Maidstone District - Council Tax Band Tax Band F

Renting a property is a big commitment and we recommend that you visit the local authority website and these websites which offer helpful information and advice about letting

[www.gov.uk/government/publications/how-to-rent](http://www.gov.uk/government/publications/how-to-rent)

[www.gov.uk/private-renting](http://www.gov.uk/private-renting)

[www.wardsofkent.co.uk/renting/tenancy-fees-individuals/](http://www.wardsofkent.co.uk/renting/tenancy-fees-individuals/)

[www.gov.uk/green-deal-energy-saving-measures](http://www.gov.uk/green-deal-energy-saving-measures)

Call Maidstone 01622 675064 ■ [wardsofkent.co.uk](http://wardsofkent.co.uk)

IMPORTANT INFORMATION: Please contact our Lettings Team who will confirm the total costs involved in renting this property. For clarification, we wish to inform the prospective tenant that we have prepared these details as a general guide. The agent has not carried out a detailed survey nor tested the services, appliances, or specific fittings (unless otherwise stated), and no warranty can be given as to their condition. All room measurements are taken at floor level. We strongly recommend that all the information which we provide about the property is verified by yourself and your advisers. The contents of this publication are © Wards, 2015. Wards is a trading name of Arun Estates Limited Registered in England No. 2597969

## Accommodation

Living Area 6.75 x 4.08m

Kitchen Diner 5.07 m 6.35m

Bedroom 1 3.12 x 3.54m

WC 1.46 x 0.91m

Utility 1.70m x 2.41m

Stairs & Landing

Bedroom 2 3.37 x 3.04m

En Suite 0.75m x 1.97m

Bedroom 3 3.32 x 2.41m

Bedroom 4 3.04 x 2.04m

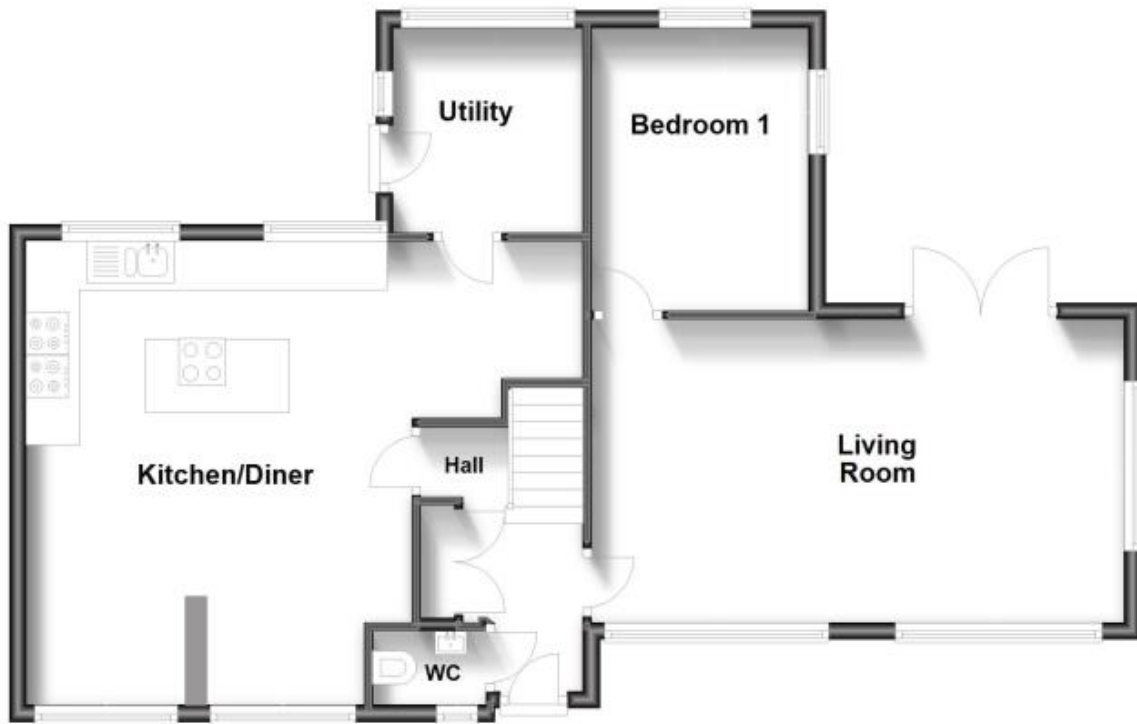
Bedroom 5 2.71m x 3.01m

Shower Room 1.55m 1.40m

Family Bathroom 1.93m x 1.65m



**Ground Floor**



**First Floor**

