



Price

£1,650 PCM

Fees Apply



Available 19/08/23

Crown Road Sutton
SM1

cubitt&west
Helping you move forwards



Main Features

- Duplex Flat
- Close to Shops
- Suit Family
- Communal Heating Included
- Long Term Let
- Residents Lift

Accommodation

Lounge Kitchen Area 6.9 x 3

Bedroom 1 4.5 x 2.6

Bedroom 2 3.6 x 2.6

Bedroom 3 4.2 x 2.2

Bathroom 1.6 x 1.5

WC 0.9 x 1.5



Deposit required is £1,903.85
Sutton London - Council Tax Band Tax Band C

Renting a property is a big commitment and we recommend that you visit the local authority website and these websites which offer helpful information and advice about letting

www.gov.uk/government/publications/how-to-rent

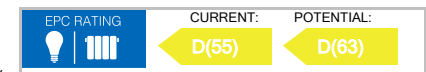
www.gov.uk/private-renting

www.cubittandwest.co.uk/renting/tenancy-fees-individuals/

www.gov.uk/green-deal-energy-saving-measures

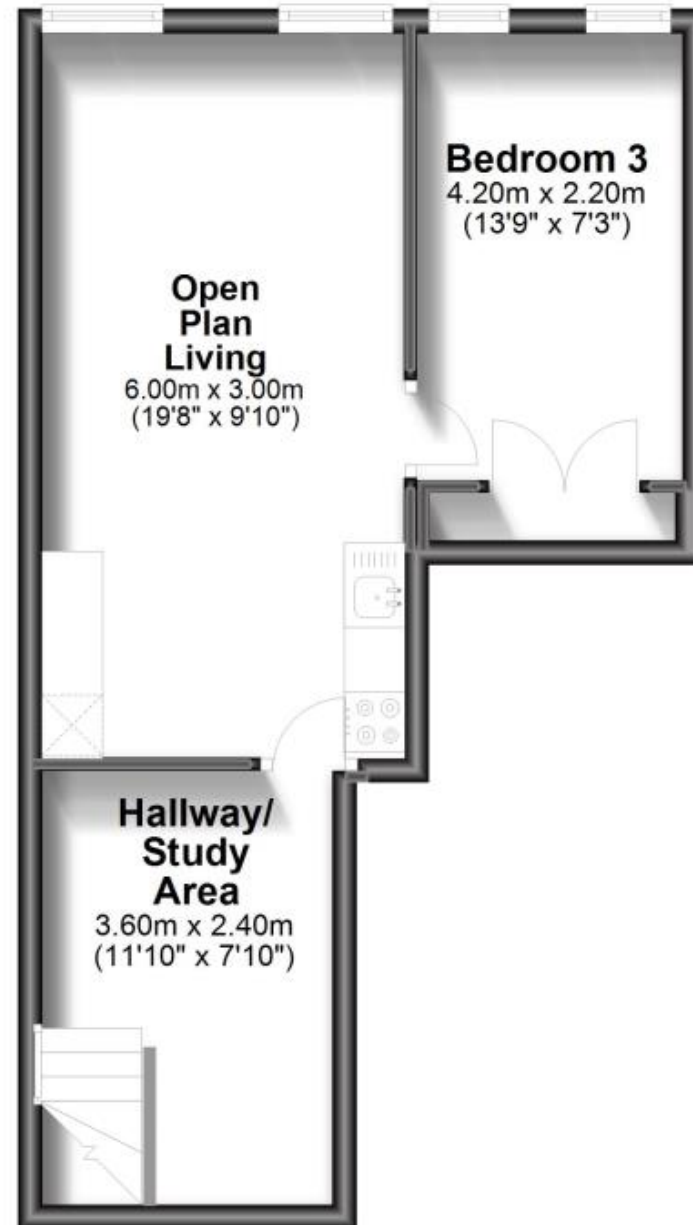
Call Sutton 020 86426266 ■ cubittandwest.co.uk

IMPORTANT INFORMATION: Please contact our Lettings Team who will confirm the total costs involved in renting this property. For clarification, we wish to inform the prospective tenant that we have prepared these details as a general guide. The agent has not carried out a detailed survey nor tested the services, appliances, or specific fittings (unless otherwise stated), and no warranty can be given as to their condition. All room measurements are taken at floor level. We strongly recommend that all the information which we provide about the property is verified by yourself and your advisers. The contents of this publication are © Cubitt & West, 2015. Cubitt & West is a trading name of Arun Estates Limited Registered in England No. 2597969



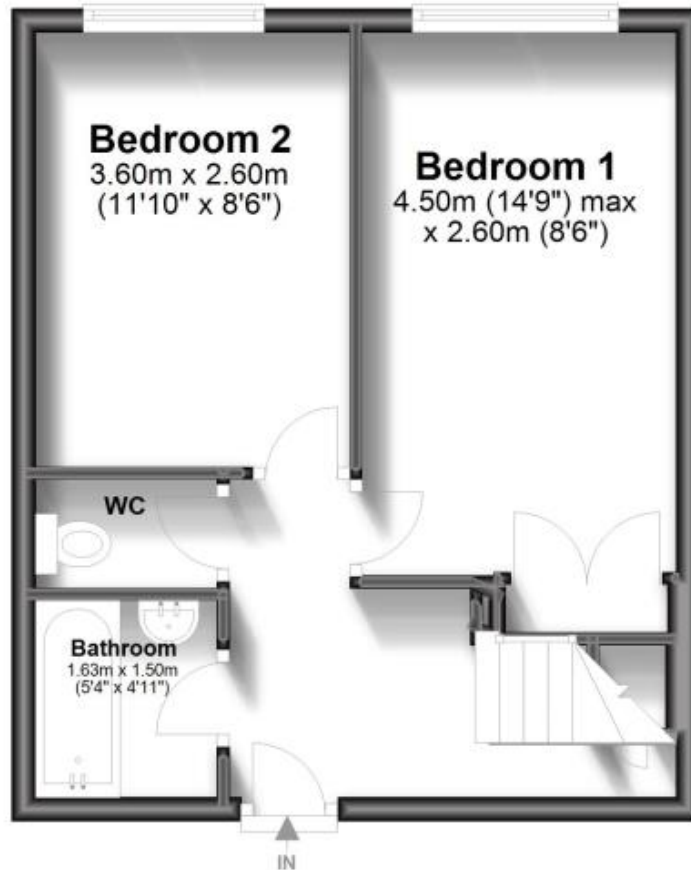
Fifth Floor

Approx. 36.5 sq. metres (393.3 sq. feet)



Fourth Floor

Approx. 32.8 sq. metres (353.0 sq. feet)



Total area: approx. 69.3 sq. metres (746.3 sq. feet)