



Price

£900 PCM

Fees Apply

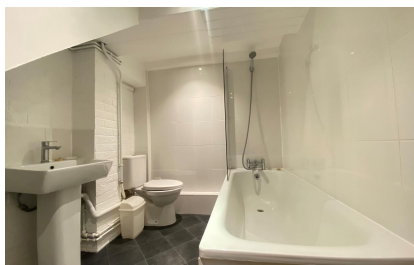


Available 25/08/23

Kingsley Road
Maidstone ME15

Wards

Helping you move forwards



Main Features

- One Bedroom Ground Floor Maisonette
- Well Presented & Modern Finish
- Walking Distance To Town Centre
- Allocated Off Road Parking
- Courtyard Garden
- Over Split Level



Deposit required is £1,038.46
Maidstone District - Council Tax Band Tax Band A

Renting a property is a big commitment and we recommend that you visit the local authority website and these websites which offer helpful information and advice about letting

www.gov.uk/government/publications/how-to-rent

www.gov.uk/private-renting

www.wardsofkent.co.uk/renting/tenancy-fees-individuals/

www.gov.uk/green-deal-energy-saving-measures

Call Ashford 01233 639654 ■ wardsofkent.co.uk

IMPORTANT INFORMATION: Please contact our Lettings Team who will confirm the total costs involved in renting this property. For clarification, we wish to inform the prospective tenant that we have prepared these details as a general guide. The agent has not carried out a detailed survey nor tested the services, appliances, or specific fittings (unless otherwise stated), and no warranty can be given as to their condition. All room measurements are taken at floor level. We strongly recommend that all the information which we provide about the property is verified by yourself and your advisers. The contents of this publication are © Wards, 2015. Wards is a trading name of Arun Estates Limited Registered in England No. 2597969

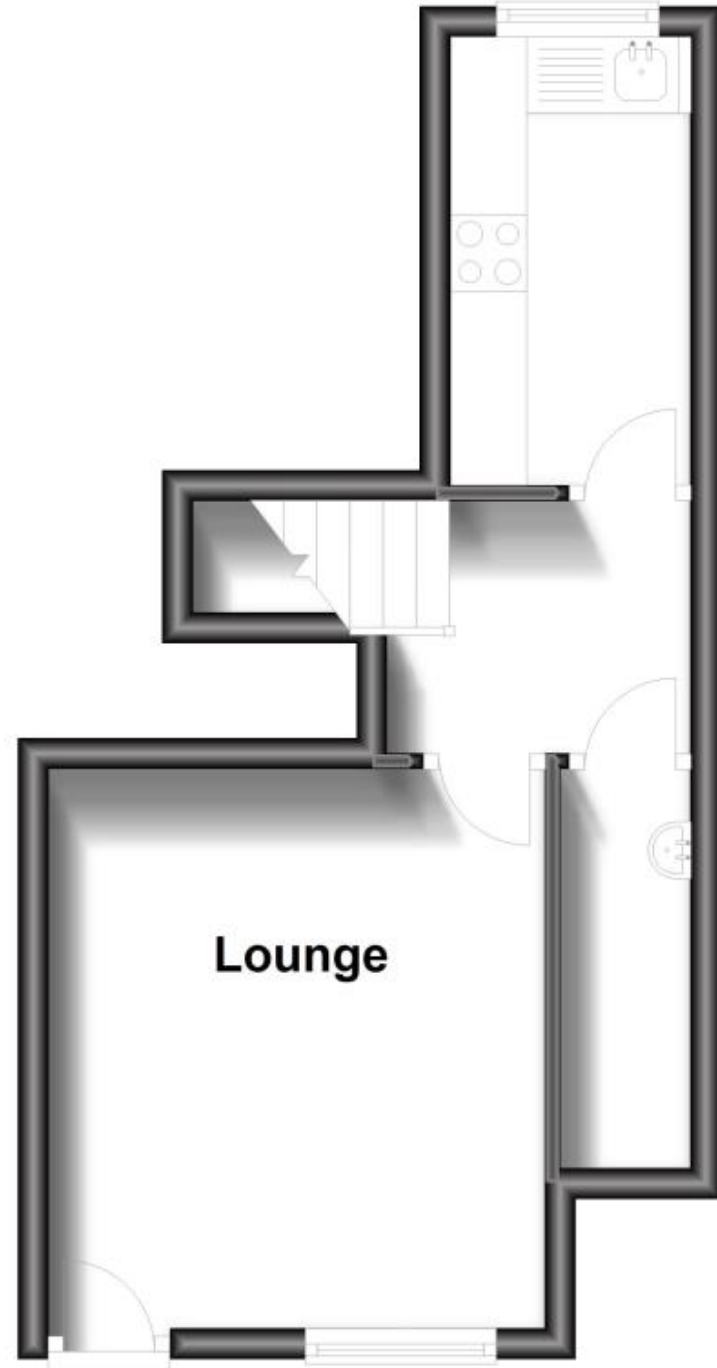
Accommodation

Lounge 3.68x3.27
Kitchen 2.95x1.58
Utility Area 2.60x0.95
Stairs To Basement
Bedroom 4.12x3.06
Bathroom 3.03x1.98
Courtyard Garden
Allocated Off Road Parking



Ground Floor

Approx. 21.0 sq. metres (226.3 sq. feet)



Basement

Approx. 21.2 sq. metres (227.9 sq. feet)

