



## Price

£1,200 PCM

Fees Apply

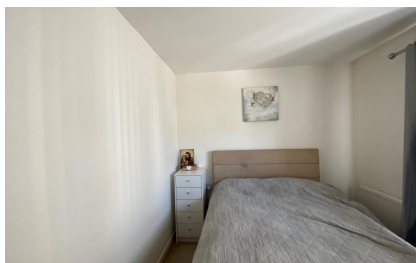


Available 29/09/23

Massey Close  
Maidstone ME15

*Wards*

Helping you move forwards



## Main Features

- Two Double Bedroom House
- Cloakroom & Modern Bathroom
- Garden
- Off Road Parking
- Great Location
- Gas Central Heating



Deposit required is £1,384.62  
Maidstone District - Council Tax Band Tax Band C

Renting a property is a big commitment and we recommend that you visit the local authority website and these websites which offer helpful information and advice about letting

[www.gov.uk/government/publications/how-to-rent](http://www.gov.uk/government/publications/how-to-rent)

[www.gov.uk/private-renting](http://www.gov.uk/private-renting)

[www.wardsofkent.co.uk/renting/tenancy-fees-individuals/](http://www.wardsofkent.co.uk/renting/tenancy-fees-individuals/)

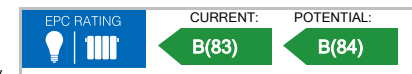
[www.gov.uk/green-deal-energy-saving-measures](http://www.gov.uk/green-deal-energy-saving-measures)

Call Maidstone 01622 675064 ■ [wardsofkent.co.uk](http://wardsofkent.co.uk)

IMPORTANT INFORMATION: Please contact our Lettings Team who will confirm the total costs involved in renting this property. For clarification, we wish to inform the prospective tenant that we have prepared these details as a general guide. The agent has not carried out a detailed survey nor tested the services, appliances, or specific fittings (unless otherwise stated), and no warranty can be given as to their condition. All room measurements are taken at floor level. We strongly recommend that all the information which we provide about the property is verified by yourself and your advisers. The contents of this publication are © Wards, 2015. Wards is a trading name of Arun Estates Limited Registered in England No. 2597969

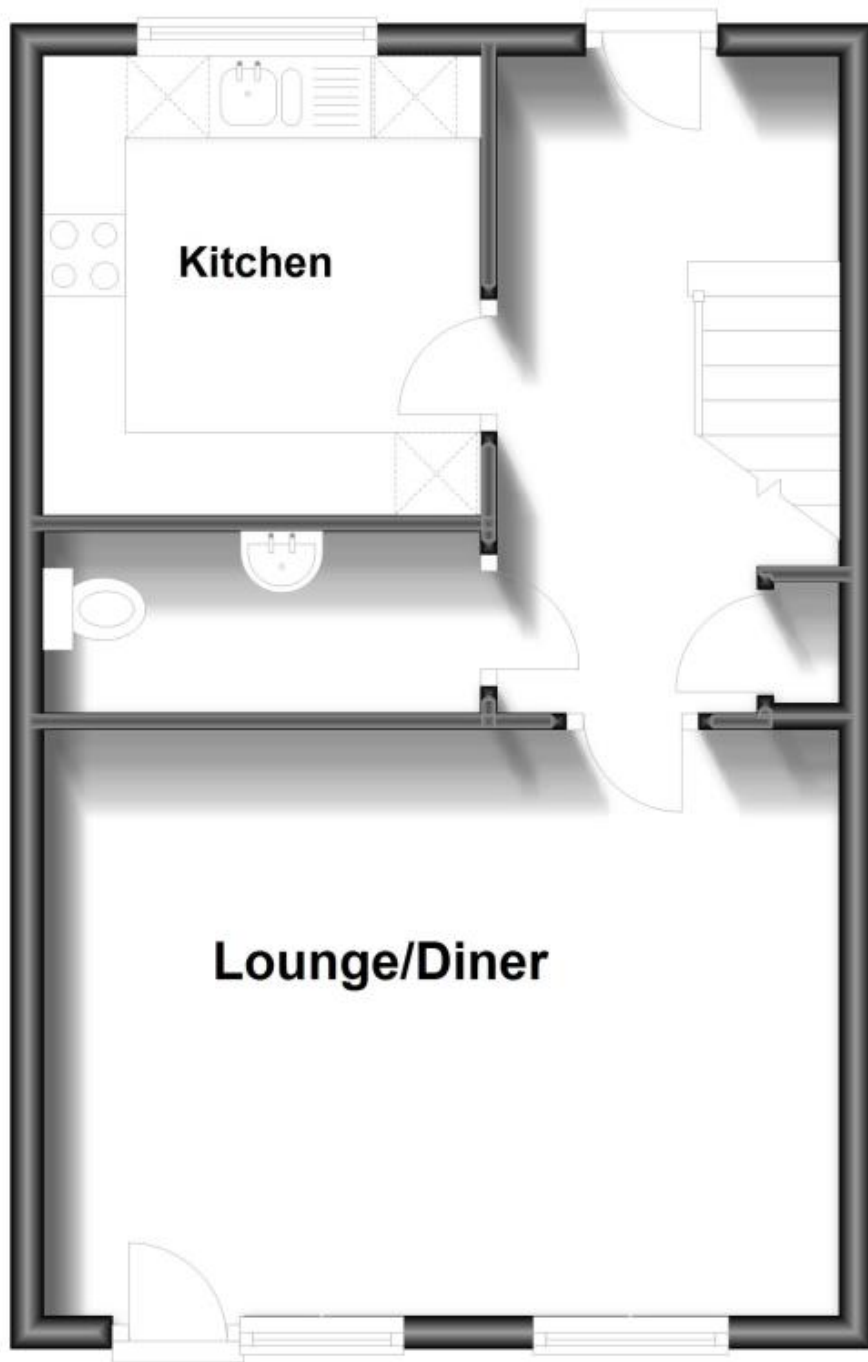
## Accommodation

Entrance Hallway  
Kitchen 9'01x8'09  
Cloakroom  
Lounge 16'01x11'06  
Stairs & Landing  
Bedroom 1 13'07x11'06  
Bedroom 2 15'11x9'06  
Bathroom 6'11x5'11  
Garden  
Off Road Allocated Parking



## Ground Floor

Approx. 37.0 sq. metres (398.6 sq. feet)



## First Floor

Approx. 34.9 sq. metres (375.7 sq. feet)

