



## Price

£2,500 PCM

Fees Apply



Available 29/07/23

27 The Street  
West Hougham  
CT15

*Wards*  
Helping you move forwards



## Main Features

- **5 bedroom detached house**
- **Off road parking for multiple vehicles**
- **Patio, private garden and courtyard**
- **No deposit option considered**
- **Open house event**
- **Video tour available**



**Deposit required is £2,884.62**  
**Dover District - Council Tax Band Tax Band F**

Renting a property is a big commitment and we recommend that you visit the local authority website and these websites which offer helpful information and advice about letting

[www.gov.uk/government/publications/how-to-rent](http://www.gov.uk/government/publications/how-to-rent)

[www.gov.uk/private-renting](http://www.gov.uk/private-renting)

[www.wardsofkent.co.uk/letting/our-tenancy-fees/](http://www.wardsofkent.co.uk/letting/our-tenancy-fees/)

[www.gov.uk/green-deal-energy-saving-measures](http://www.gov.uk/green-deal-energy-saving-measures)

**Call Dover 01304 201109 ■ [wardsofkent.co.uk](http://wardsofkent.co.uk)**

IMPORTANT INFORMATION: Please note that administration fees are charged in addition to the rent and security deposit. Please contact our Lettings Team who will confirm the total costs involved in renting this property. For clarification, we wish to inform the prospective tenant that we have prepared these details as a general guide. The agent has not carried out a detailed survey nor tested the services, appliances, or specific fittings (unless otherwise stated), and no warranty can be given as to their condition. All room measurements are taken at floor level. We strongly recommend that all the information which we provide about the property is verified by yourself and your advisers. The contents of this publication are © Wards, 2015. Wards is a trading name of Arun Estates Limited Registered in England No. 2597969

## Accommodation

### GROUND FLOOR

**Entrance Hall:** 0.92m x 2.15m 3' x 7'1"

**Open Plan Living:** 5.91m x 3.54m 19'5" x 11'7"

**Kitchen / Breakfast Room:** 6.01m x 4.44m 19'9" x 14'7"

**Family Room:** 3.30m x 7.19m 10'10" x 23'7"

**Games Room:** 6.16m x 3.91m 20'3" x 12'10"

**Shower Room:** 1.39m x 2.34m 4'7" x 7'8"

**Bedroom 5:** 3.69m x 2.34m 12'1" x 7'8"

**Study:** 5.03m x 3.49m 16'6" x 11'5"

### FIRST FLOOR

**Bedroom 1:** 7.04m x 3.498m 23'1" x 11'5"

**En-suite:** 1.21m x 3.49m 4' x 11'5"

**Landing:** 3.23m x 2.00m 10'7" x 6'7"

**Family Bathroom:** 2.45m x 2.58m 8' x 8'6"

**Bedroom 2:** 5'76m x 3.47m 18'11" x 11'5"

### SECOND FLOOR

**Bedroom 3:** 3.87m x 3.91m 12'8" x 12'10"

**Bedroom 4:** 3.87m x 2.98m 12'8" x 9'9"

### OUTSIDE

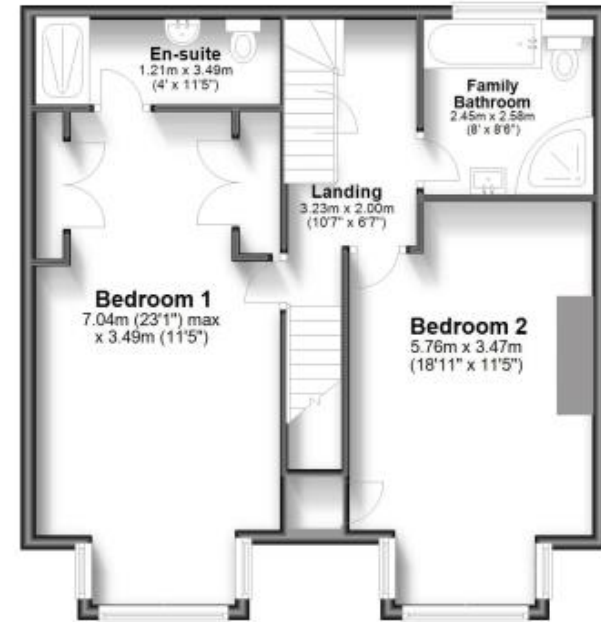
**Private Garden**



### Ground Floor



### First Floor



### Second Floor

