



## Price

£1,150 PCM

Fees Apply



Available 15/09/23

Manor Lane  
Hollingbourne ME17

*Wards*

Helping you move forwards





## Main Features

- Two Bedroom Period Flat
- Video Walk About Available
- No Deposit Option Available
- Fully Furnished
- Water & Electricity Included
- Allocated Off Road Parking



Deposit required is £1,326.92  
Maidstone District - Council Tax Band Tax Band C

Renting a property is a big commitment and we recommend that you visit the local authority website and these websites which offer helpful information and advice about letting

[www.gov.uk/government/publications/how-to-rent](http://www.gov.uk/government/publications/how-to-rent)

[www.gov.uk/private-renting](http://www.gov.uk/private-renting)

[www.wardsofkent.co.uk/renting/tenancy-fees-individuals/](http://www.wardsofkent.co.uk/renting/tenancy-fees-individuals/)

[www.gov.uk/green-deal-energy-saving-measures](http://www.gov.uk/green-deal-energy-saving-measures)

Call Maidstone 01622 675064 ■ [wardsofkent.co.uk](http://wardsofkent.co.uk)

IMPORTANT INFORMATION: Please contact our Lettings Team who will confirm the total costs involved in renting this property. For clarification, we wish to inform the prospective tenant that we have prepared these details as a general guide. The agent has not carried out a detailed survey nor tested the services, appliances, or specific fittings (unless otherwise stated), and no warranty can be given as to their condition. All room measurements are taken at floor level. We strongly recommend that all the information which we provide about the property is verified by yourself and your advisers. The contents of this publication are © Wards, 2015. Wards is a trading name of Arun Estates Limited Registered in England No. 2597969

## Accommodation

Entrance

Stairs & Landing

Internal Hallway

Lounge/Dining/Kitchen Area 6.58x4.76

Bedroom 1 4.80x3.83

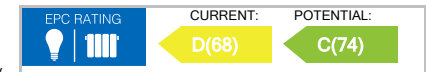
Bedroom 2 4.00x3.00

Bathroom 2.68x1.80

Attic Storage

Patio Area

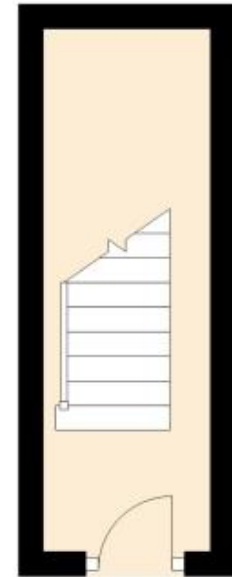
Allocated Off Road Parking



### First Floor



### Ground Floor



### Attic

