



## Price

£2,000 PCM

Fees Apply



Available 07/07/23

Skylark Avenue  
Emsworth PO10

**cubitt&west**  
Helping you move forwards





## Main Features

- ALL VIEWINGS 20.06.2023
- Bookings Only, Limited Spaces
- PETS At Discretion
- GARAGE And Off Road Parking
- Viewing A Must
- Transport Links Close By



Deposit required is £2,307.69  
Havant District - Council Tax Band Tax Band E

Renting a property is a big commitment and we recommend that you visit the local authority website and these websites which offer helpful information and advice about letting

[www.gov.uk/government/publications/how-to-rent](http://www.gov.uk/government/publications/how-to-rent)

[www.gov.uk/private-renting](http://www.gov.uk/private-renting)

[www.cubittandwest.co.uk/renting/tenancy-fees-individuals/](http://www.cubittandwest.co.uk/renting/tenancy-fees-individuals/)

[www.gov.uk/green-deal-energy-saving-measures](http://www.gov.uk/green-deal-energy-saving-measures)

Call Portsmouth 023 92653157 ■ [cubittandwest.co.uk](http://cubittandwest.co.uk)

IMPORTANT INFORMATION: Please contact our Lettings Team who will confirm the total costs involved in renting this property. For clarification, we wish to inform the prospective tenant that we have prepared these details as a general guide. The agent has not carried out a detailed survey nor tested the services, appliances, or specific fittings (unless otherwise stated), and no warranty can be given as to their condition. All room measurements are taken at floor level. We strongly recommend that all the information which we provide about the property is verified by yourself and your advisers. The contents of this publication are © Cubitt & West, 2015. Cubitt & West is a trading name of Arun Estates Limited Registered in England No. 2597969

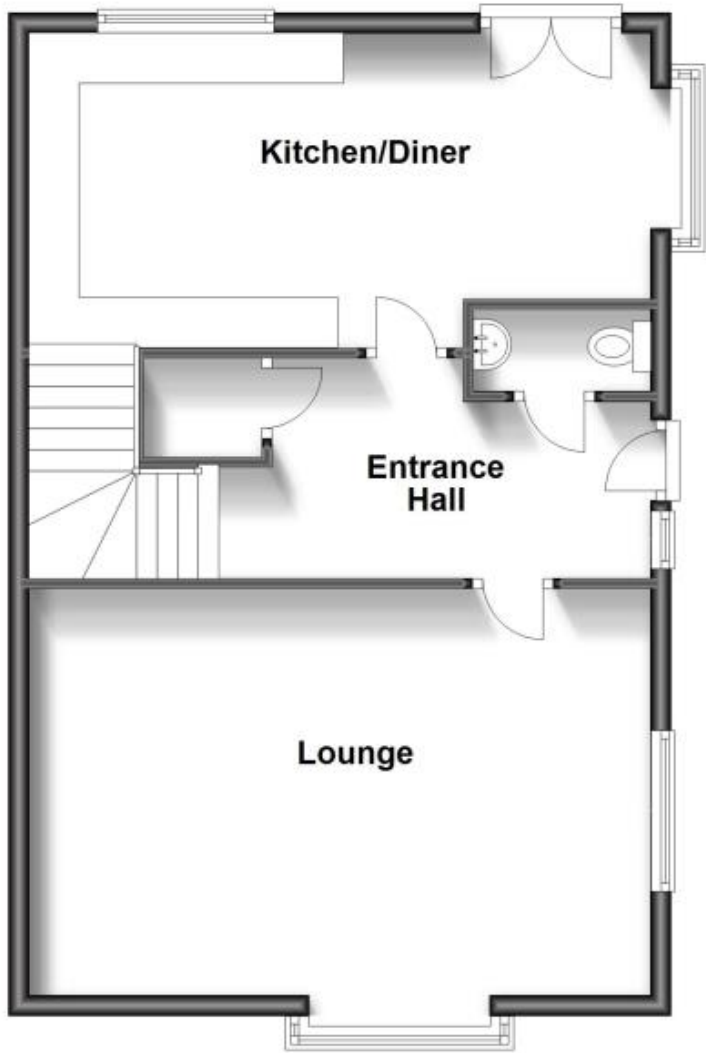
## Accommodation

- Lounge 17'7-13'3
- Kitchen/Diner 20'3-10'3
- Bedroom One 12'11-11'6
- Bedroom Two 11'0-10'6
- Bedroom Three 13'10-8'8
- Bedroom Four 11'5-8'7
- Family Bathroom
- En-Suite Bedroom Two
- Garage
- Shower Room



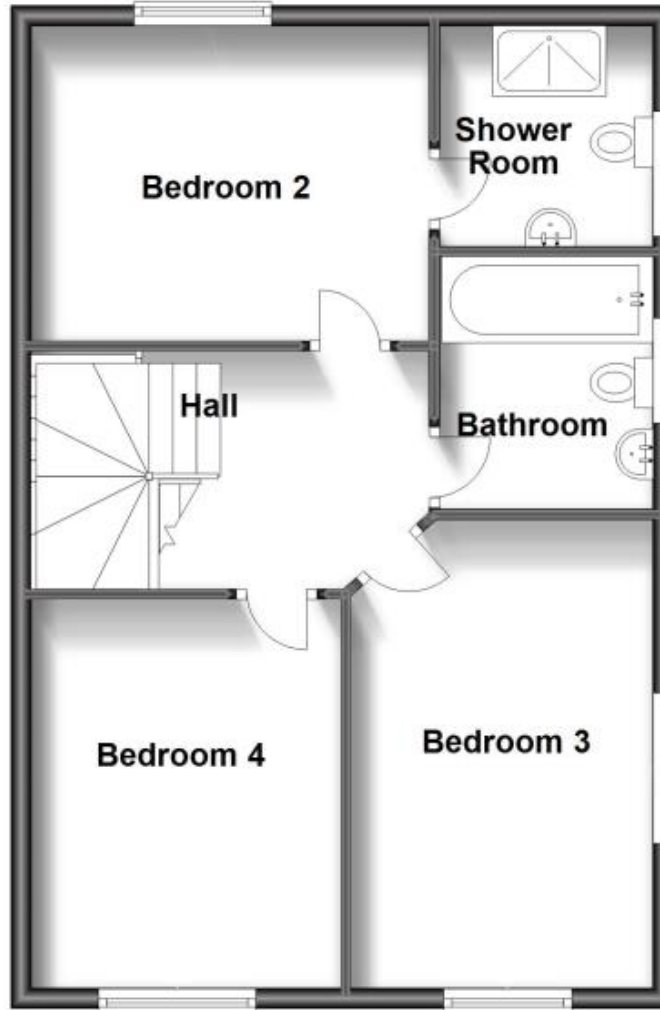
### Ground Floor

Approx. 59.5 sq. metres (639.9 sq. feet)



### First Floor

Approx. 57.2 sq. metres (615.8 sq. feet)



### Second Floor

Approx. 36.3 sq. metres (391.0 sq. feet)

