



## Price

£1,600 PCM

Fees Apply



Available 08/07/23

Church Road Murston  
ME10

*Wards*

Helping you move forwards



## Main Features

- **Brand New Three Bedroom Terrace**
- **Off Road Parking**
- **High specification throughout**
- **Part of the exclusive development of Woodcombe**
- **Solar panels to reduce your energy bills**
- **Unfurnished**

## Accommodation

**Kitchen** 11.6 x 12.2  
**Lounge** 15.5 x 18.4  
**Cloakroom** 5.9 x 3.5  
**Bedroom 1** 18.4 x 9.8  
**Bedroom 2** 10.1 x 8.5  
**Bedroom 3** 12.0 x 7.9  
**Bathroom** 9.2 x 3.5



**Deposit required is £1,846.15**  
**Swale District - Council Tax Band Tax Band D**

Renting a property is a big commitment and we recommend that you visit the local authority website and these websites which offer helpful information and advice about letting

[www.gov.uk/government/publications/how-to-rent](http://www.gov.uk/government/publications/how-to-rent)

[www.gov.uk/private-renting](http://www.gov.uk/private-renting)

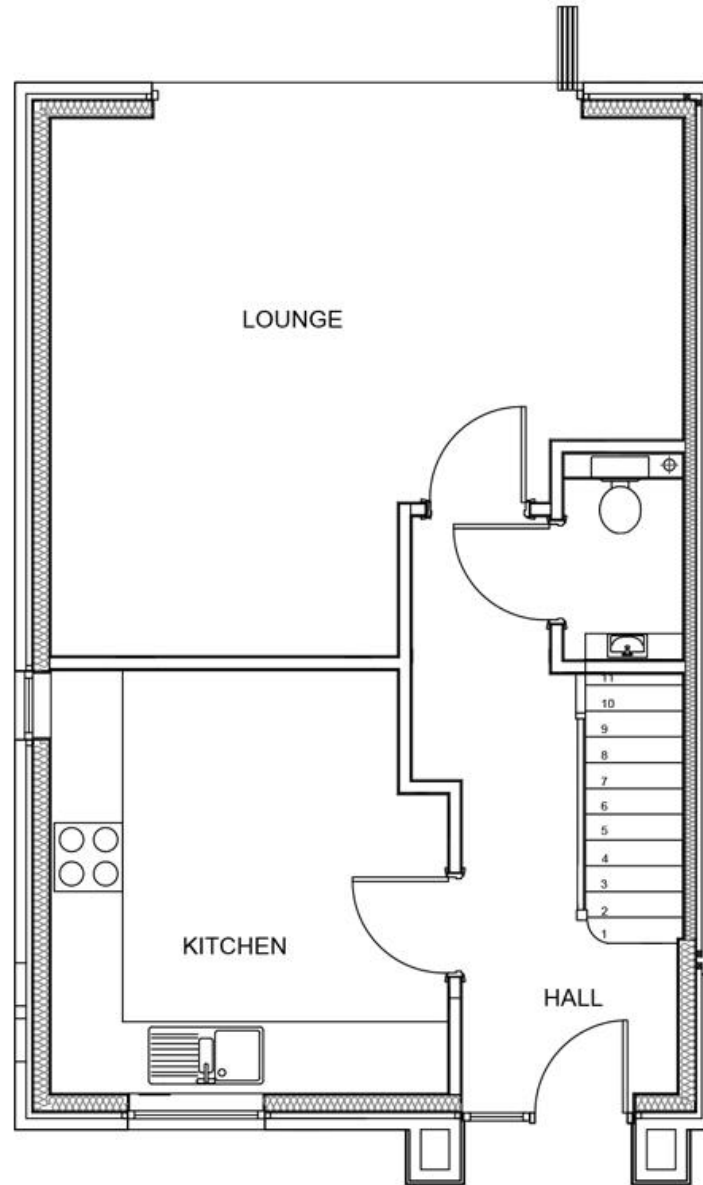
[www.wardsofkent.co.uk/renting/tenancy-fees-individuals/](http://www.wardsofkent.co.uk/renting/tenancy-fees-individuals/)

[www.gov.uk/green-deal-energy-saving-measures](http://www.gov.uk/green-deal-energy-saving-measures)

**Call Medway 01634 714848 ■ [wardsofkent.co.uk](http://wardsofkent.co.uk)**

IMPORTANT INFORMATION: Please contact our Lettings Team who will confirm the total costs involved in renting this property. For clarification, we wish to inform the prospective tenant that we have prepared these details as a general guide. The agent has not carried out a detailed survey nor tested the services, appliances, or specific fittings (unless otherwise stated), and no warranty can be given as to their condition. All room measurements are taken at floor level. We strongly recommend that all the information which we provide about the property is verified by yourself and your advisers. The contents of this publication are © Wards, 2015. Wards is a trading name of Arun Estates Limited Registered in England No. 2597969





Plot 3 Ground Floor