



Price

£2,200 PCM

Fees Apply



Available 31/08/23

Leeds Road Langley
ME17

Wards
Helping you move forwards



Main Features

- **Extended Four Bedroom Home**
- **Video Walk About Available**
- **No Deposit Option Available**
- **Designer Style Kitchen With Appliances**
- **Garage & Driveway**
- **Village Setting**



Deposit required is £2,538.46
Maidstone District - Council Tax Band Tax Band E

Renting a property is a big commitment and we recommend that you visit the local authority website and these websites which offer helpful information and advice about letting

www.gov.uk/government/publications/how-to-rent

www.gov.uk/private-renting

www.wardsofkent.co.uk/renting/tenancy-fees-individuals/

www.gov.uk/green-deal-energy-saving-measures

Call Maidstone 01622 675064 ■ wardsofkent.co.uk

IMPORTANT INFORMATION: Please contact our Lettings Team who will confirm the total costs involved in renting this property. For clarification, we wish to inform the prospective tenant that we have prepared these details as a general guide. The agent has not carried out a detailed survey nor tested the services, appliances, or specific fittings (unless otherwise stated), and no warranty can be given as to their condition. All room measurements are taken at floor level. We strongly recommend that all the information which we provide about the property is verified by yourself and your advisers. The contents of this publication are © Wards, 2015. Wards is a trading name of Arun Estates Limited Registered in England No. 2597969

Accommodation

Entrance Porch 3.38x2.49

Hallway 6.28x2.29

Cloakroom

Kitchen/Diner 5.34x5.08

Utility Room 2.34x1.42

Study Area 2.92x2.67

Lounge 11x8

Stairs & Landing

Bedroom 1 4.27x3.36

En Suite Shower Room 2.39x0.99

Bedroom 2 3.28x2.80

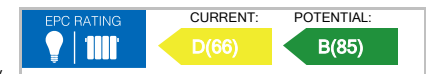
Bedroom 3 3.51x2.08

Bedroom 4 2.44x2.21

Bathroom 2.36x1.60

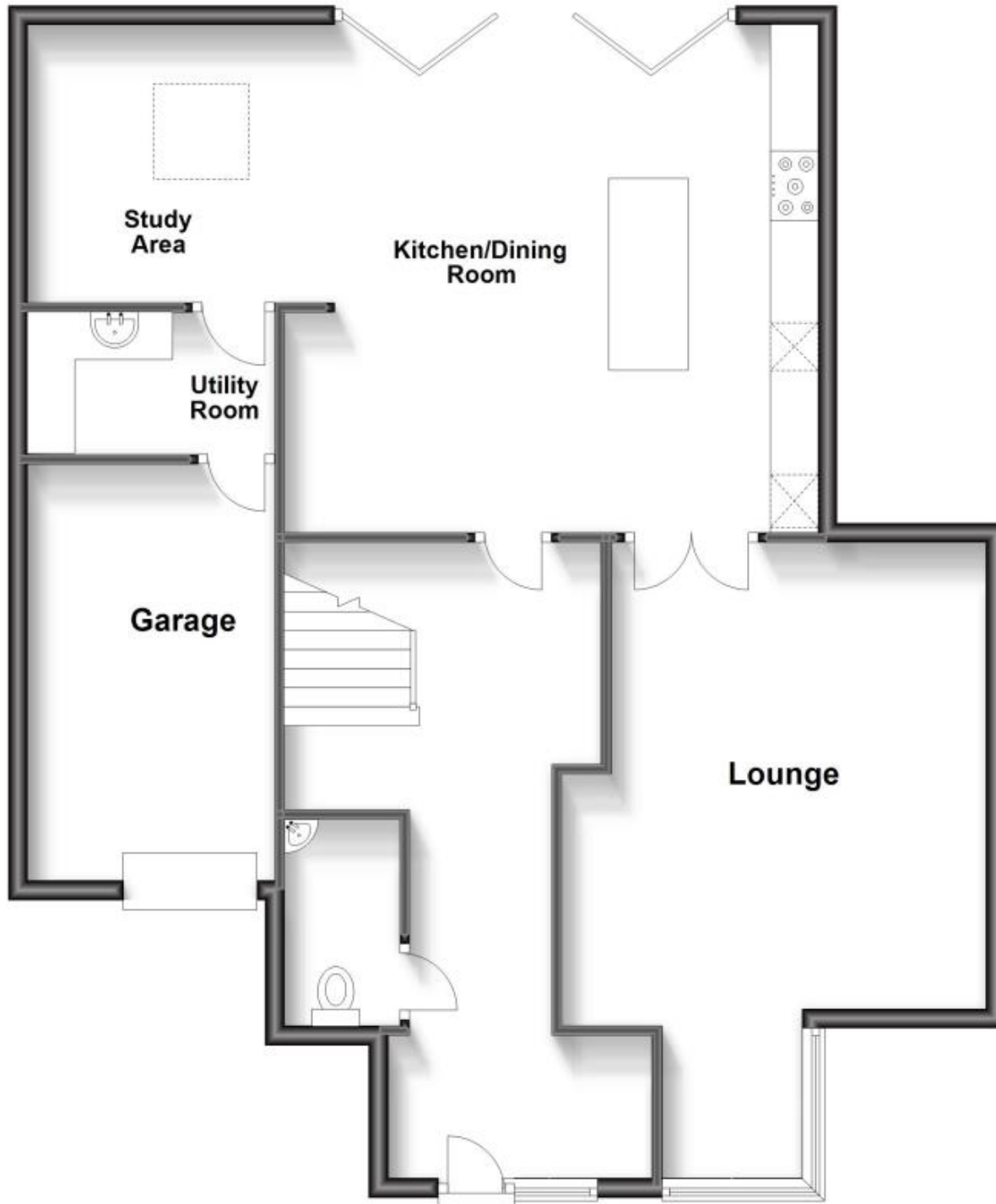
Rear Garden

Garage & Driveway



Ground Floor

Approx. 101.6 sq. metres (1093.7 sq. feet)



First Floor

Approx. 52.5 sq. metres (565.3 sq. feet)

