



## Price

**£1,100 PCM**

Fees Apply



Available 24/06/23

**Brockhampton Road  
Havant PO9**

**cubitt&west**  
Helping you move forwards



## Main Features

- **ALL VIEWINGS 02.06.2023**
- **Bookings Only, Limited Spaces**
- **NO DEPOSIT OPTION AVAILABLE**
- **ALLOCATED PARKING**
- **Apologies, NO PETS**
- **Transport Links Close By**



**Deposit required is £1,269.23**  
**Havant District - Council Tax Band Tax Band C**

Renting a property is a big commitment and we recommend that you visit the local authority website and these websites which offer helpful information and advice about letting

[www.gov.uk/government/publications/how-to-rent](http://www.gov.uk/government/publications/how-to-rent)

[www.gov.uk/private-renting](http://www.gov.uk/private-renting)

[www.cubittandwest.co.uk/renting/tenancy-fees-individuals/](http://www.cubittandwest.co.uk/renting/tenancy-fees-individuals/)

[www.gov.uk/green-deal-energy-saving-measures](http://www.gov.uk/green-deal-energy-saving-measures)

**Call Portsmouth 023 92653157** ■ **cubittandwest.co.uk**

IMPORTANT INFORMATION: Please contact our Lettings Team who will confirm the total costs involved in renting this property. For clarification, we wish to inform the prospective tenant that we have prepared these details as a general guide. The agent has not carried out a detailed survey nor tested the services, appliances, or specific fittings (unless otherwise stated), and no warranty can be given as to their condition. All room measurements are taken at floor level. We strongly recommend that all the information which we provide about the property is verified by yourself and your advisers. The contents of this publication are © Cubitt & West, 2015. Cubitt & West is a trading name of Arun Estates Limited Registered in England No. 2597969

## Accommodation

**Lounge And Dining Area** 14'4-18'9

**Kitchen** 9'8-7-9

**Bedroom One** 10'8-10'11

**Bedroom Two** 15'11-8'9

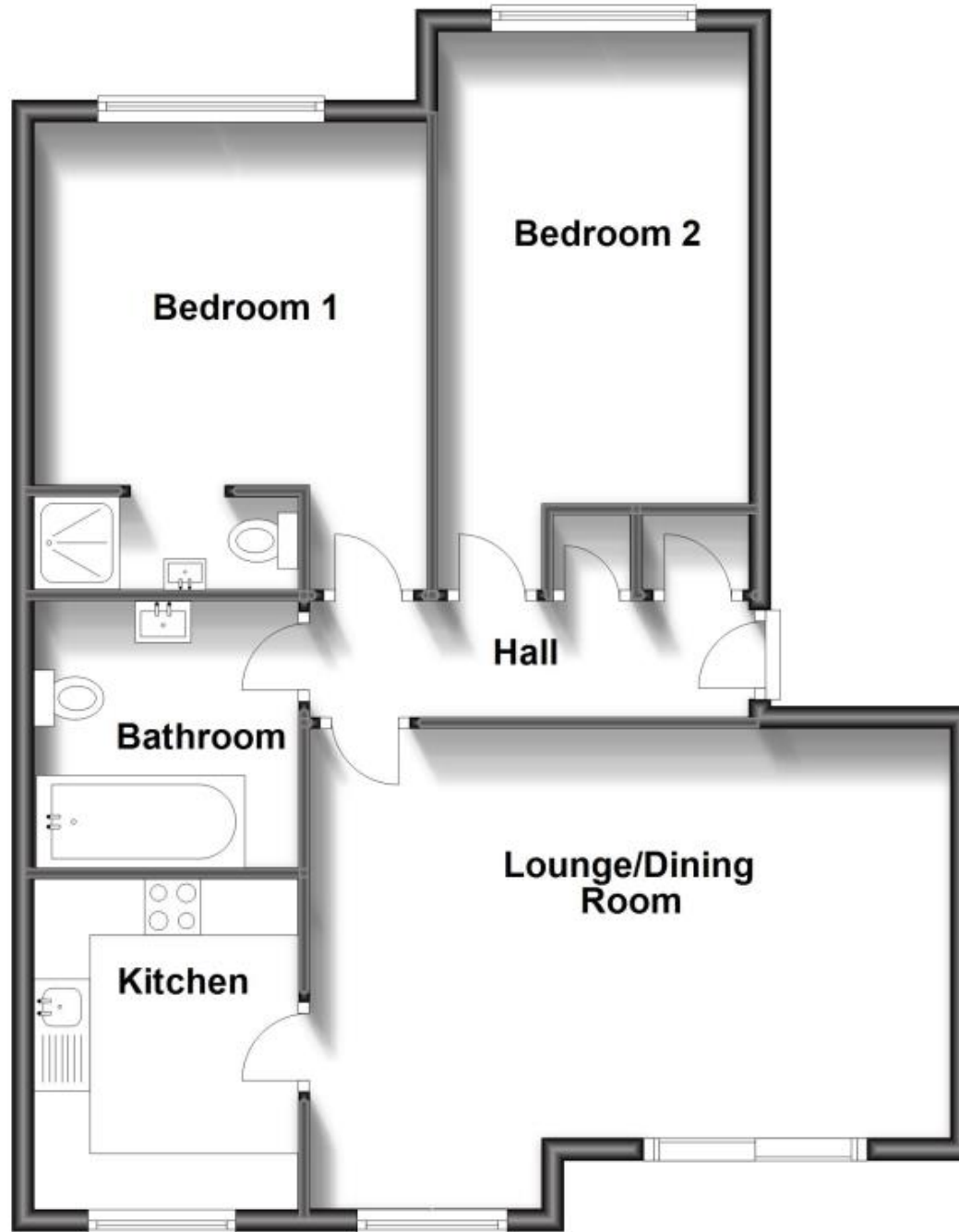
**Family Bathroom** 7'10-7'8

**En-Suite To Master** 7'8-2'6



## Ground Floor

Approx. 69.9 sq. metres (752.7 sq. feet)



Total area: approx. 69.9 sq. metres (752.7 sq. feet)