



## Price

**£1,800 PCM**

Fees Apply

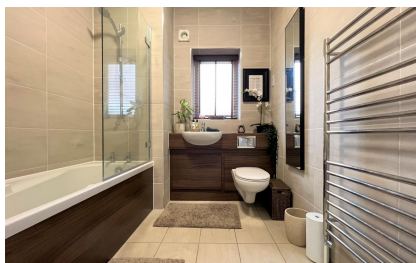


Available 28/02/23

**Chequers Court Spring  
Vale DA1**

*Wards*

Helping you move forwards



## Main Features

- Two Equally Sized Double Bedrooms
- Open Plan Kitchen/Lounge
- Allocated Off Street Parking Space
- Huge Balcony
- Loft Space
- Video Tour Available



**Deposit required is £2,076.92**  
**- Council Tax Band Tax Band B**

Renting a property is a big commitment and we recommend that you visit the local authority website and these websites which offer helpful information and advice about letting

[www.gov.uk/government/publications/how-to-rent](http://www.gov.uk/government/publications/how-to-rent)

[www.gov.uk/private-renting](http://www.gov.uk/private-renting)

[www.wardsofkent.co.uk/renting/tenancy-fees-individuals/](http://www.wardsofkent.co.uk/renting/tenancy-fees-individuals/)

[www.gov.uk/green-deal-energy-saving-measures](http://www.gov.uk/green-deal-energy-saving-measures)

**Call Dartford 01322 311291 ■ [wardsofkent.co.uk](http://wardsofkent.co.uk)**

IMPORTANT INFORMATION: Please contact our Lettings Team who will confirm the total costs involved in renting this property. For clarification, we wish to inform the prospective tenant that we have prepared these details as a general guide. The agent has not carried out a detailed survey nor tested the services, appliances, or specific fittings (unless otherwise stated), and no warranty can be given as to their condition. All room measurements are taken at floor level. We strongly recommend that all the information which we provide about the property is verified by yourself and your advisers. The contents of this publication are © Wards, 2015. Wards is a trading name of Arun Estates Limited Registered in England No. 2597969

## Accommodation

**Bedroom 1** 3.04 x 5.44

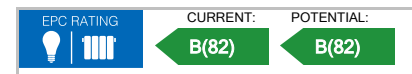
**En-suite** 2.15 x 1.52

**Entrance Hall** 3.61 x 3.42

**Bedroom 2** 3.60 x 3.39

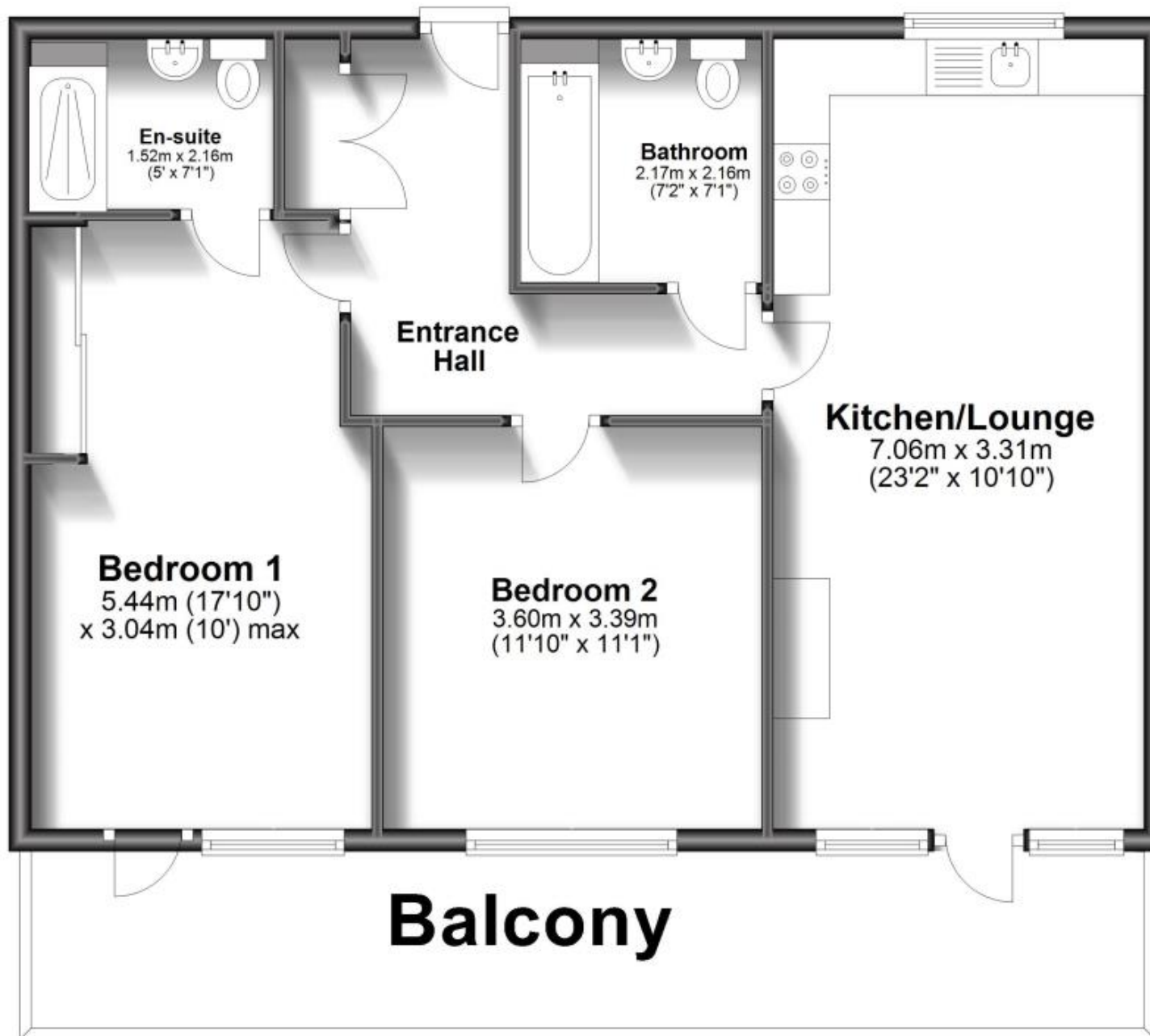
**Bathroom** 2.16 x 2.16

**Kitchen/Lounge** 7.06 x 3.31



# Ground Floor

Approx. 70.2 sq. metres (755.4 sq. feet)



Total area: approx. 70.2 sq. metres (755.4 sq. feet)