



Price

£1,850 PCM

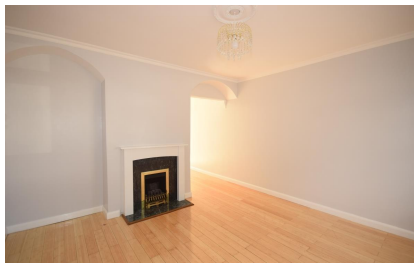
Fees Apply



Available 01/08/22

**Northview Swanley
BR8**

Wards
Helping you move forwards



Main Features

- Completely refurbished
- Large Driveway
- Close to local station
- Garden with side access
- Semi Detached



Deposit required is £2,134.62
Sevenoaks District - Council Tax Band N/A

Renting a property is a big commitment and we recommend that you visit the local authority website and these websites which offer helpful information and advice about letting

www.gov.uk/government/publications/how-to-rent

www.gov.uk/private-renting

www.wardsofkent.co.uk/renting/tenancy-fees-individuals/

www.gov.uk/green-deal-energy-saving-measures

Call Dartford 01322 311291 ■ wardsofkent.co.uk

IMPORTANT INFORMATION: Please contact our Lettings Team who will confirm the total costs involved in renting this property. For clarification, we wish to inform the prospective tenant that we have prepared these details as a general guide. The agent has not carried out a detailed survey nor tested the services, appliances, or specific fittings (unless otherwise stated), and no warranty can be given as to their condition. All room measurements are taken at floor level. We strongly recommend that all the information which we provide about the property is verified by yourself and your advisers. The contents of this publication are © Wards, 2015. Wards is a trading name of Arun Estates Limited Registered in England No. 2597969

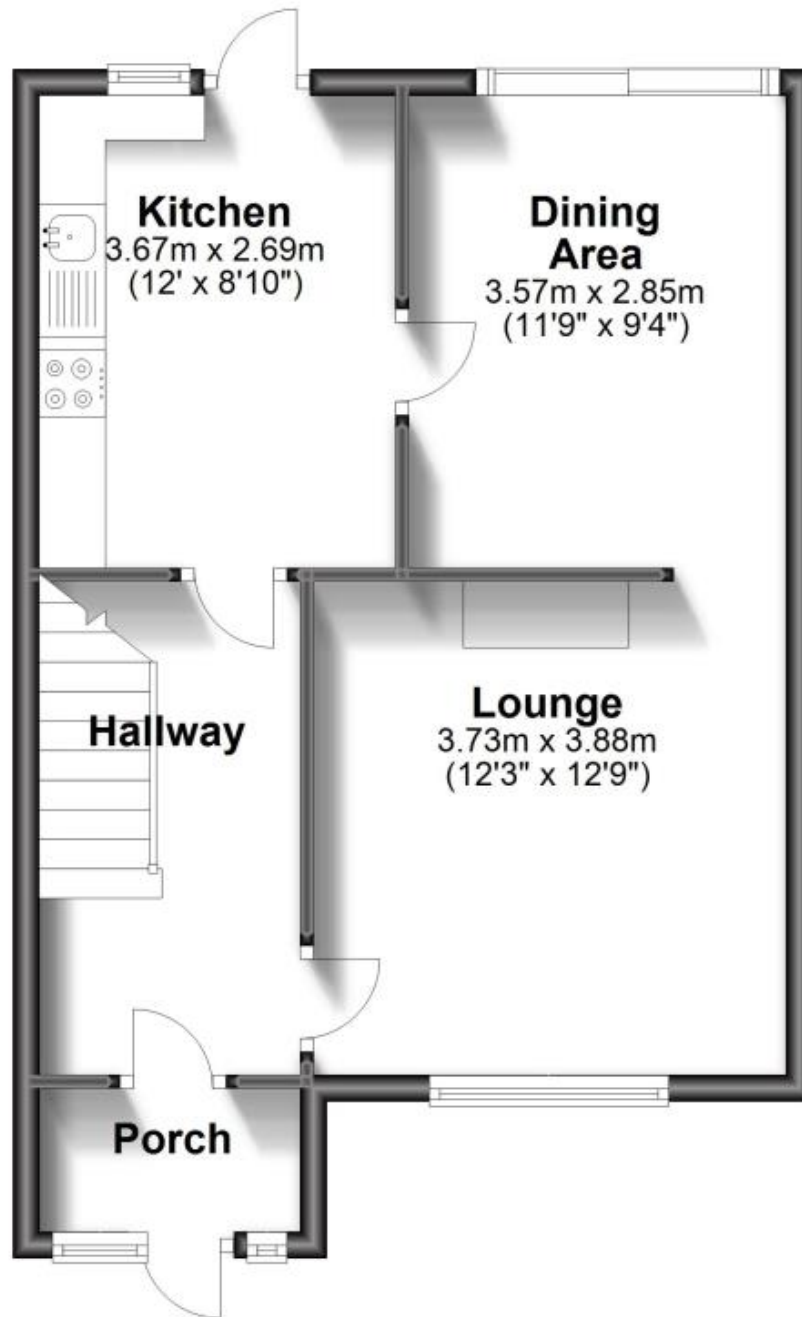
Accommodation

Lounge 3.88 x 3.73
Dining Room 3.57 x 2.85
Kitchen 3.67 x 2.69
Hallway
Bedroom 1 3.93 x 3.26
Bedroom 2 3.20 x 3.05
Bedroom 3 3.00 x 2.35
Bathroom



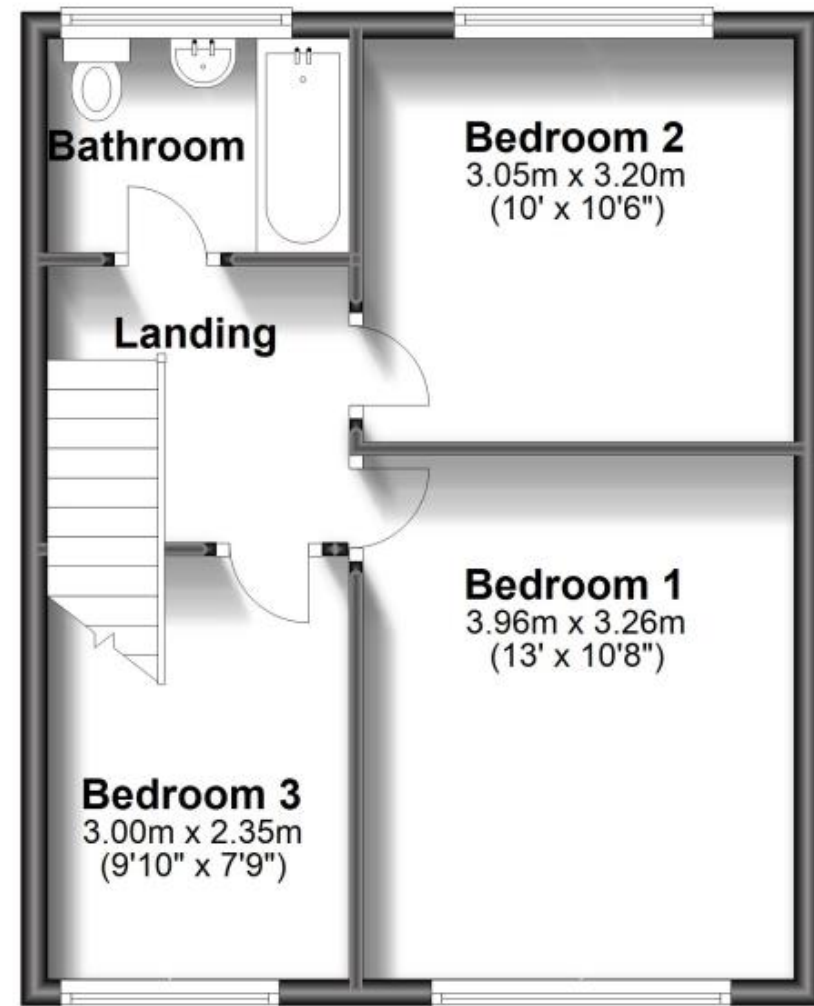
Ground Floor

Approx. 45.5 sq. metres (489.6 sq. feet)



First Floor

Approx. 39.7 sq. metres (427.1 sq. feet)



Total area: approx. 85.2 sq. metres (916.7 sq. feet)